



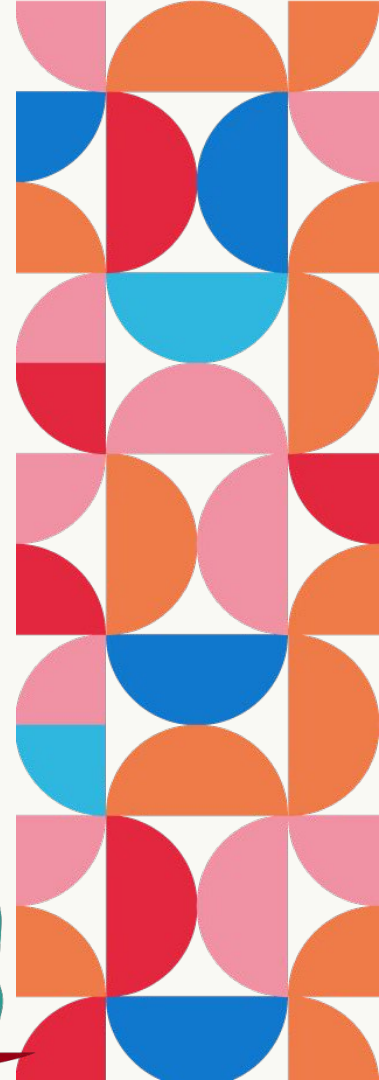
Data Infrastructure for Measuring the Care Economy

Jaimie Worker, Senior Director of Policy and Research
Caring Across Generations

July 16, 2025



Cartoon image of 9 people who are caregivers
and care recipients doing various activities.





Build Power Amongst
the Caring Majority

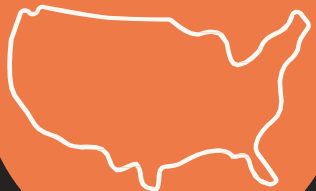


EVERYONE CAN
CARE FOR
THEIR LOVED
ONES



EVERYONE CAN
WORK, LIVE, AND
AGE WITH
DIGNITY

Win Federal- and
State- Level Policies



Transform Cultural
Norms and Narratives



The Caring Majority

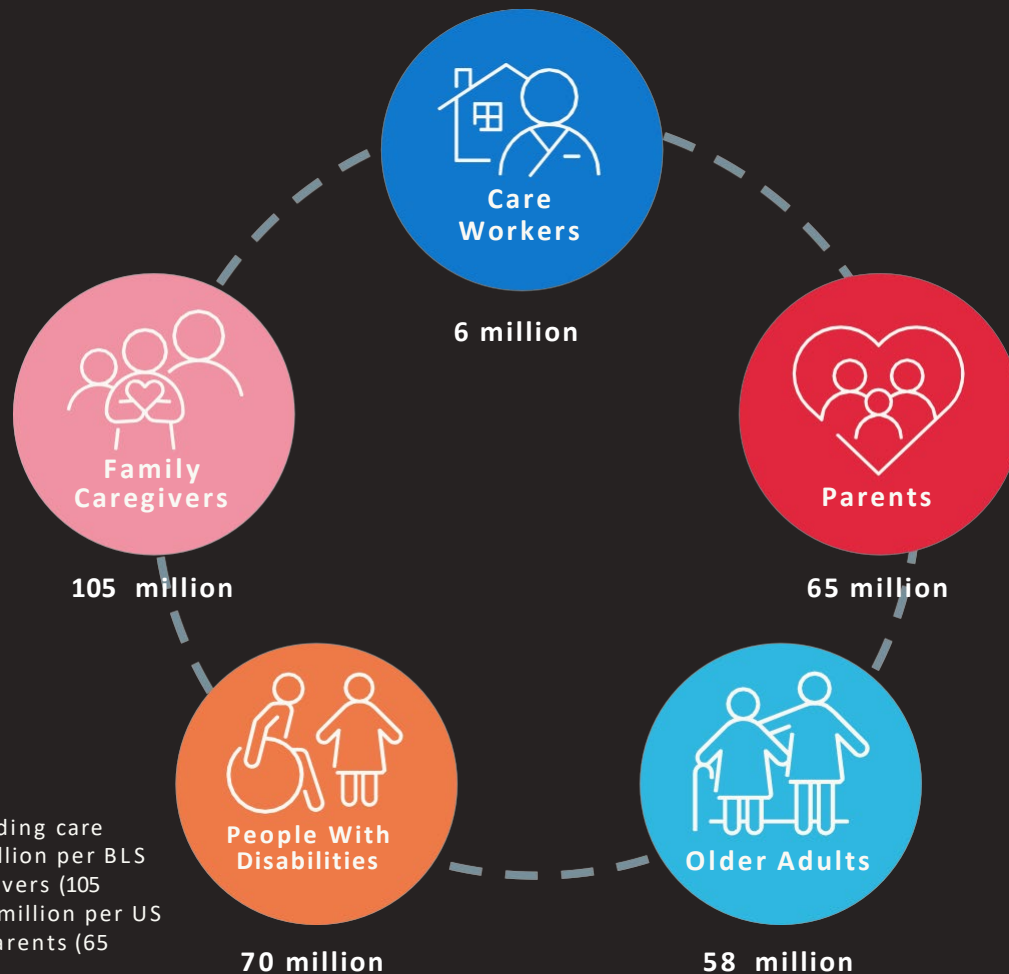


Diagram representing all the people touched by care including care workers with most recent data available from sources (6 million per BLS data on child care and direct care workforce), Family Caregivers (105 million per RAND Corporation), people with disabilities (70 million per US census), and older adults (58 million per US Census), and parents (65 million per the Kaiser Family Foundation)

Policy Context and Considerations for Data Infrastructure Measuring the Care Economy

- **Care work is the work that makes all other work possible, yet our current public investments undervalue care and leave care workers underpaid.**
- **Medicaid, not private insurance or Medicare, is the primary source of funding for aging and disability care.**
- **Family caregivers are providing essential, mostly unpaid care for their loved ones and need support.**

Opportunities for Strengthening Data Infrastructure Measuring the Care Economy

- Understanding the experiences of unpaid family caregivers, including health and economic challenges, unmet needs
- Understanding the experiences of older adults and people disabilities who need care, but remain on waiting lists or perhaps may be unaware of the services available.
- Assessing impact of care workforce job quality (i.e. wages and benefits, unionization rates) on consistent and reliable care that supports the needs of care recipients and family caregivers
- Examining state and federal investments in care and any trends or shifts over time
- Identifying key economic indicators that explore the relationship between the health of the economy and public investments in care
- Data availability by state, county, state districts and federal Congressional districts, disaggregated



Thank you!