

Covid-19: Federal and State Governance in a Time of Public Health Crisis

Michael T. Osterholm, PhD, MPH

Regents Professor

McKnight Presidential Endowed Chair in Public Health

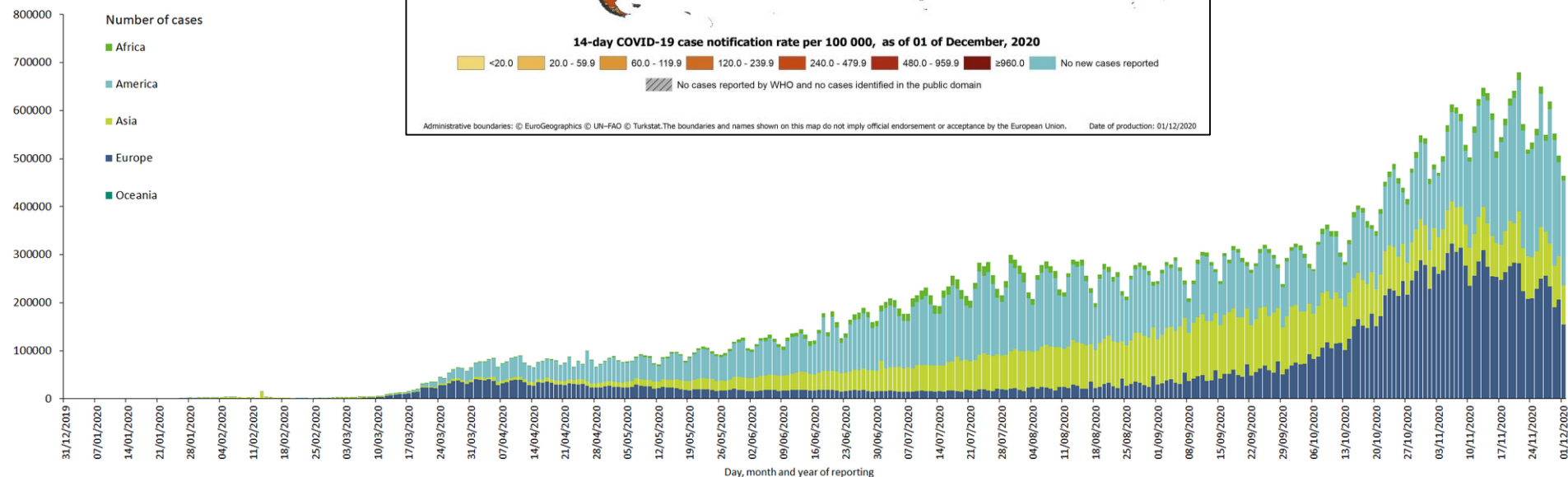
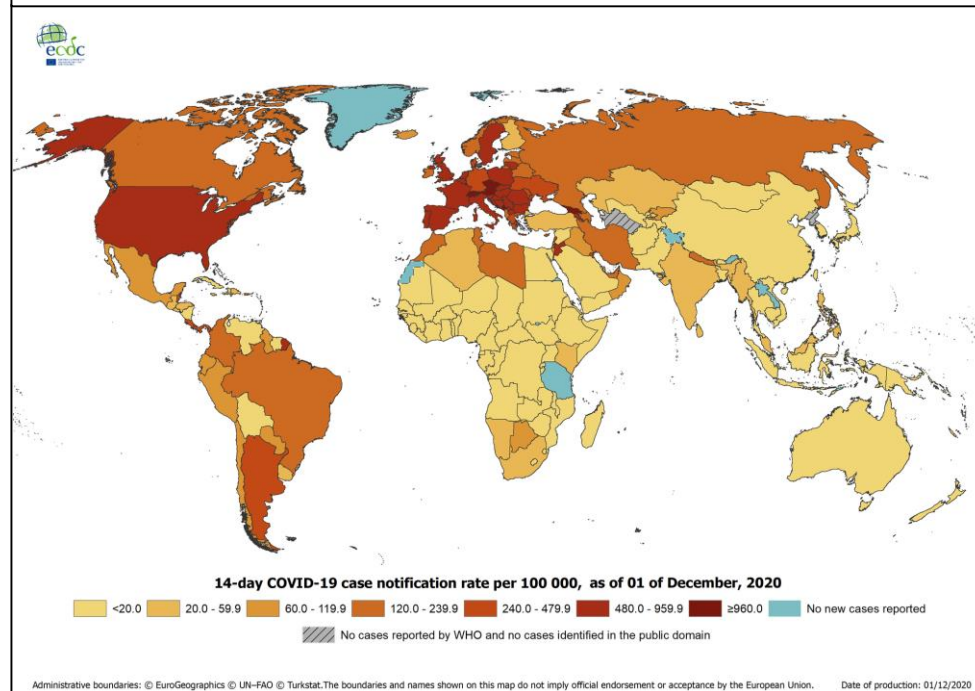
Director, Center for Infectious Disease
Research & Policy

Distinguished University Teaching Professor, Division of Environmental Health
Sciences, School of Public Health

Professor, Technological Leadership Institute College of Science and
Engineering

Adjunct Professor, Medical School
University of Minnesota

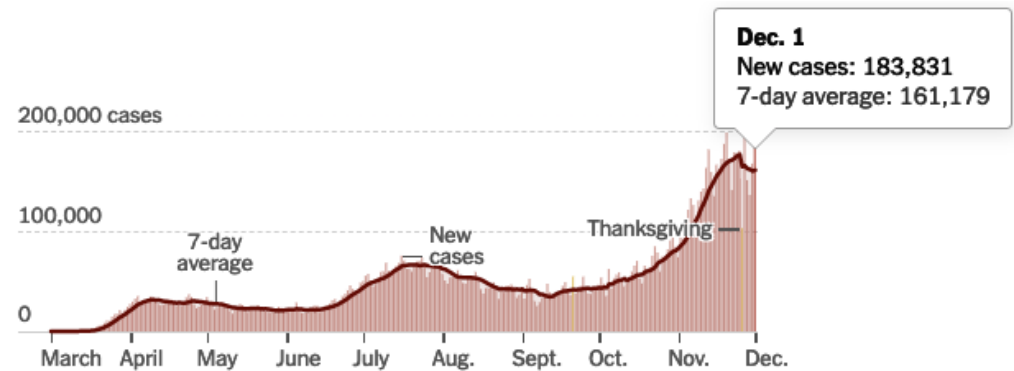
Geographic distribution of 14-day cumulative number of reported COVID-19 cases per 100 000 population, worldwide, as of 1 December 2020



Distribution of COVID-19 cases worldwide, as of 1 December 2020

Coronavirus in the U.S.: Latest Map and Case Count

By The New York Times Updated December 2, 2020, 12:13 A.M. E.T.



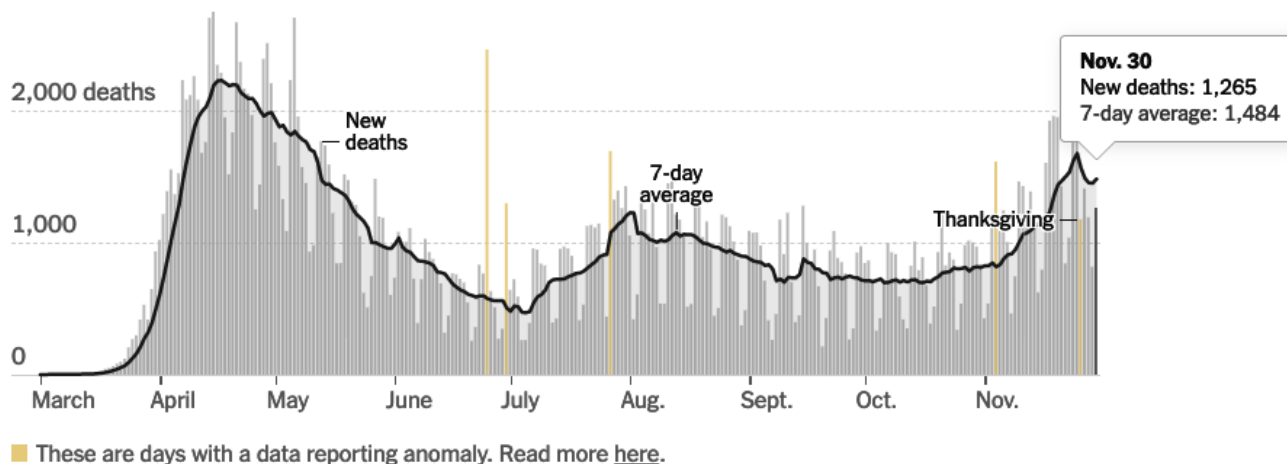
	TOTAL REPORTED	ON DEC. 1	14-DAY CHANGE
Cases	13.7 million+	183,831	+2% ➡
Deaths	270,627	2,604	+31% ➡
Hospitalized		98,691	+32% ➡

■ Day with data reporting anomaly.
Hospitalization data from the Covid Tracking Project; 14-day change trends use 7-day averages.

Coronavirus in the U.S.: Latest Map and Case Count

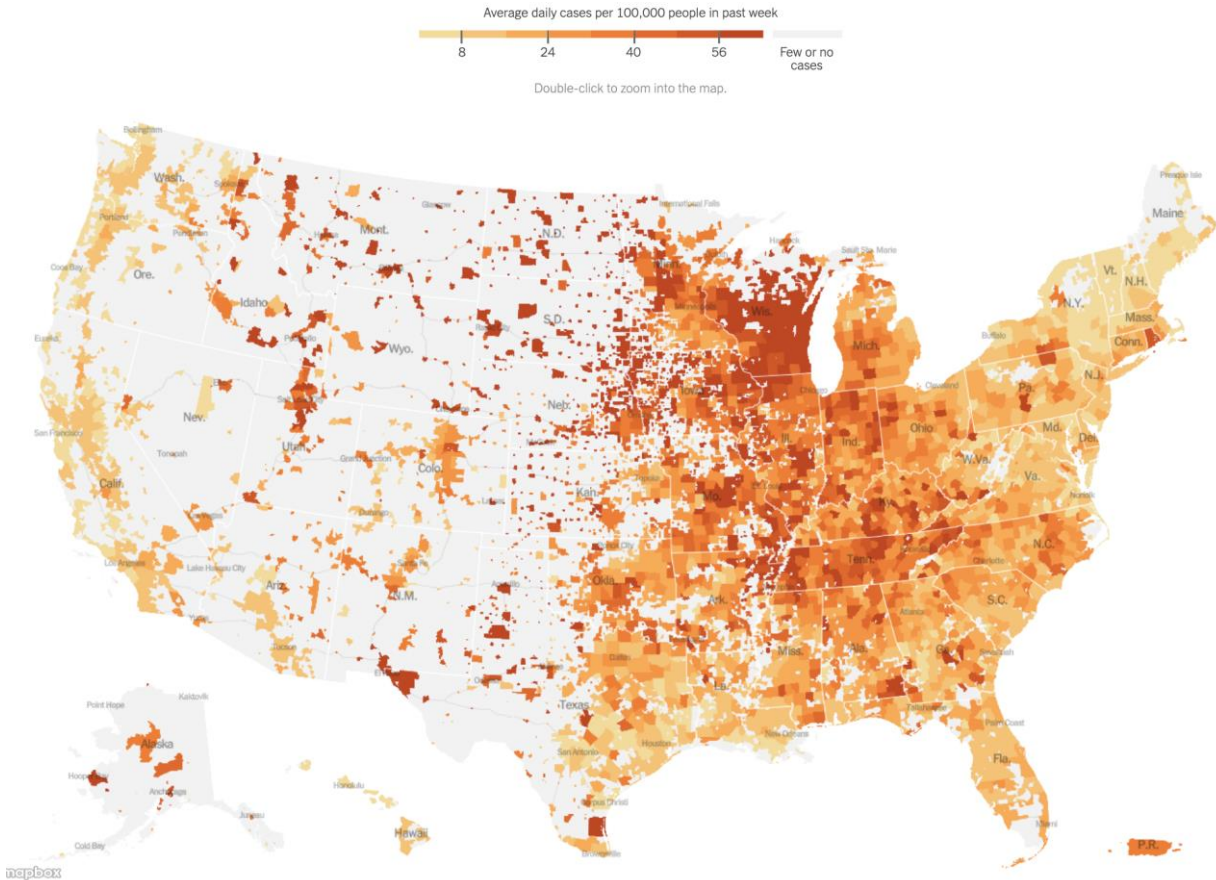
By The New York Times Updated December 1, 2020, 8:03 P.M. E.T.

New reported deaths by day in the United States



Covid in the U.S.: Latest Map and Case Count

By The New York Times Updated October 30, 2020, 12:18 A.M. E.T.



Sources: State and local health agencies. Population and demographic data from Census Bureau.



From: Michael Osterholm

Sent: Monday, January 20, 2020 3:47 PM

Subject: CLF Alert: January 20th Update on the Coronavirus Outbreak in Wuhan, China

Importance: High

Dear CIDRAP Leadership Forum members,

Please find below the link to our CIDRAP News story today.

<http://www.cidrap.umn.edu/news-perspective/2020/01/new-coronavirus-infects-health-workers-spreads-korea>

I think this article summarizes most of what we know. The problem is there remains a lot we don't know. There are 14 healthcare worker cases in Wuhan reported today; it's unclear if they represent multiple exposures to different patients in different hospital locations, OR a single supper shedder event in one hospital. Neither possibility is good news, but I most worry about this coronavirus causing super spreader-transmission.

It is clear now that we will see global transmission of the virus in the next week to 10 days. In short, I'm certain this will cause our next pandemic. There are just too many infections in China and in a highly mobile society to not expect the potential global reach of this virus. And of course we are aware of the massive domestic travel that will occur in China in the next week as part of the Chinese New Year celebration.

Chronicle of a Pandemic Foretold

Learning From the
COVID-19 Failure—Before
the Next Outbreak Arrives

*Michael T. Osterholm and Mark
Olshaker*

“Time is running out to prepare for the next pandemic. We must act now with decisiveness and purpose. Someday, after the next pandemic has come and gone, a commission much like the 9/11 Commission will be charged with determining how well government, business, and public health leaders prepared the world for the catastrophe when they had clear warning. What will be the verdict?”